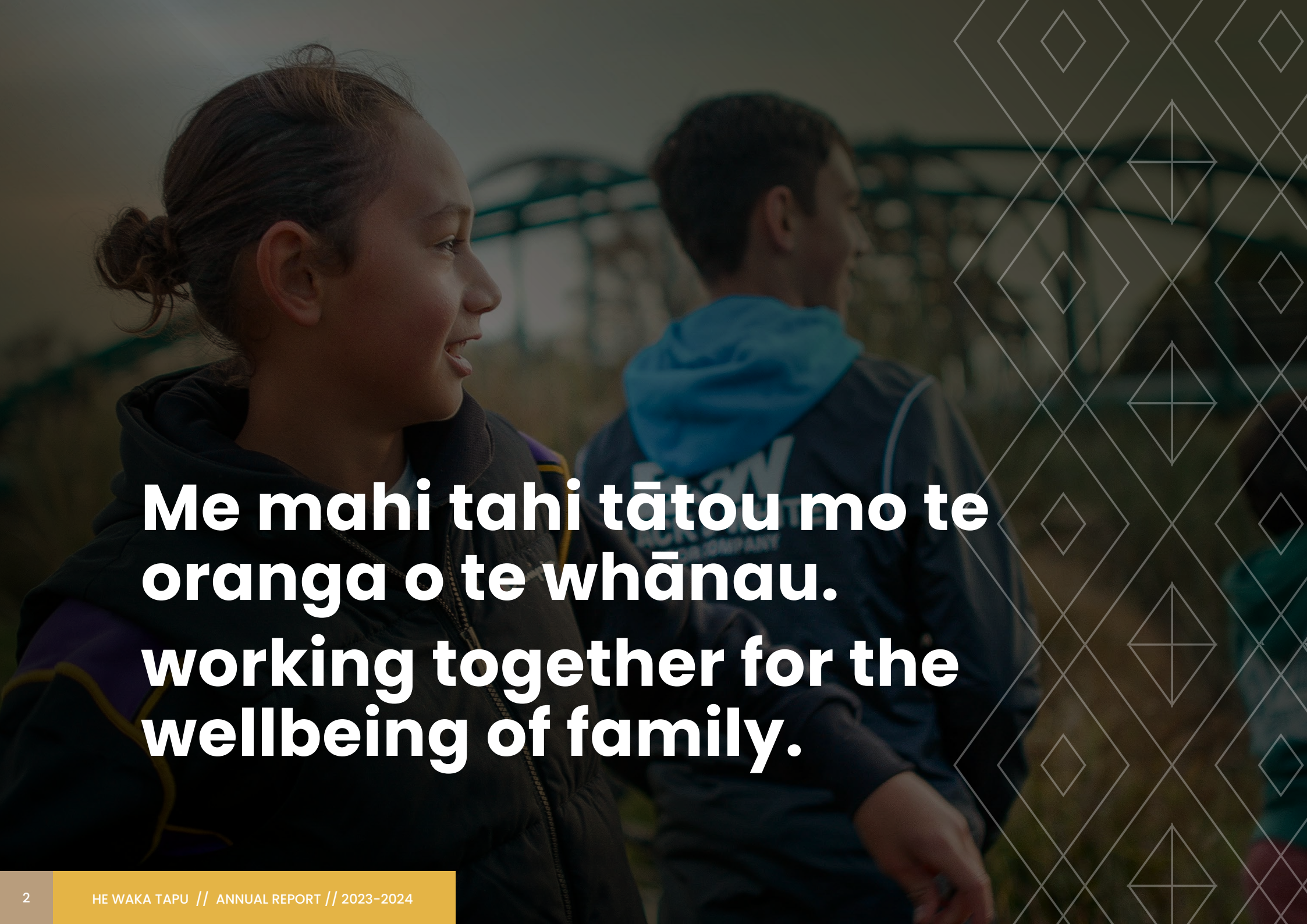


# PŪRONGO -Ā-TAU

HE WAKA TAPU  
*Me mahi tahi tātou mo te ora o te whānau*







**Me mahi tahi tātou mo te  
oranga o te whānau.  
working together for the  
wellbeing of family.**



# CONTENTS

<b>About Us</b>	<b>Mihimihi</b>	<b>4</b>
	<b>Whanonga Pono</b>	<b>5</b>
	<b>Ā Mātou Mahi</b>	<b>6</b>
<b>Reports</b>	<b>Chair Board Report</b>	<b>7</b>
	<b>Chief Executive Officer Report</b>	<b>9</b>
	<b>Ko Ngā Arotake</b>	<b>11</b>
<b>Projects &amp; Services</b>	<b>Ahikā Affordable Housing</b>	<b>14</b>
	<b>Te Aranga Health</b>	<b>16</b>
	<b>Celebrating Matariki</b>	<b>18</b>
<b>Cultural Development</b>	<b>Kaimahi Development</b>	<b>20</b>
<b>Hāpori</b>	<b>Pae Ora</b>	<b>23</b>
	<b>Whānau Days</b>	<b>24</b>
<b>Looking Forward</b>	<b>Ka Mua Ka Muri Walking backwards into the future</b>	<b>26</b>
<b>Financials</b>	<b>Ko ngā Tauākī Pūtea, Financial Statements</b>	<b>29</b>



# MIHIMIHI

## Introduction

**Tēnā koutou katoa, ngā mana, ngā reo, me ngā karangatanga maha o te motu.**

We begin with heartfelt respect, acknowledging the diverse connections that unite us as whānau and community. He mihi nui ki ngā tūpuna, whose wisdom continues to shape our work today.

As we look back on another year of milestones, we celebrate the progress made, reflecting on both the challenges and achievements. A key milestone has been the success of the Ahikā affordable housing project, a powerful example of collective effort. This initiative has not only provided homes but also a sense of security and opportunity for our whānau. Ngā mihi to all those who have contributed to this cause.

We also wish to recognise the unwavering dedication of our kaimahi. Their commitment to continuous growth and professional

development in our work is evident in the care they provide, making a meaningful difference in the lives of many. Mā te ako, mā te tipu, ka taea te whakatutuki ngā wawata o te whānau me te hāpori.

In this time of reflection, we remember Mark Palmer, whose daily efforts in supporting tangata whaiora and his remarkable dedication continue to leave an enduring impact. Moe mai rā, e hoa.

Together, we move forward, united in our vision to strengthen whānau and nurture our communities. He waka eke noa – our collective strength will guide us toward a future where the aspirations of our people are realised.

Nō reira, e te whānau, tēnā koutou, tēnā koutou, tēnā tātou katoa.





# WHANONGA PONO

Organisational values

Our values guide our organisation’s mission and actions for our hāpori, kaimahi, and stakeholders.

They are the heart of our approach to delivering social and health services, grounded in manaakitanga, whanaungatanga, rangatiratanga, and whakaako.

These values shape our work and strengthen our commitment to whānau and community wellbeing overall.



## Manaakitanga

We are respectful, show generosity and care for others to ensuring everyone’s mana is upheld.



## Whanaungatanga

We build relationships through shared experiences and working together.



## Rangatiratanga

We lead by inspiring others to see what is possible.



## Whakakoako

We all learn.



# Ā MĀTOU MAHI

## Our work

At He Waka Tapu, our mission is to create a sense of purpose and connection, empowering whānau and communities. Every day, we work to help individuals and families overcome challenges, embrace opportunities, and pursue a brighter future.

Our services span from health and wellbeing initiatives to housing solutions like the Ahikā affordable rental project. We strive to create environments where whānau are inspired to build lasting success. Additionally, we host ‘whānau days’ and events that bring people together, building a spirit of sharing, learning, and community. These gatherings are a reminder of the importance of unity and the power of collective action and manaakitanga.

The heart of our work lies with our dedicated kaimahi, whose empathy, expertise, and ongoing growth ensure we offer meaningful support. Their contributions turn obstacles into opportunities, strengthening the bonds that hold our community together.

Through this work, He Waka Tapu continues to champion resilience and build environments where whānau can flourish. By standing together, we can create spaces where safety, growth, and hope are available to all.



5630

WHAIORA &  
WHĀNAU

139

KAIMAHI

51

FUNDERS &  
SPONSORS

21

PROGRAMMES  
& SERVICES



# CHAIR BOARD REPORT

TĒNĀ KOUTOU KATOĀ,

**E hara taku tao i te toa takitahi, he toa taki tini.  
My strength is not as an individual, but as a collective.**

As I reflect on the past year, I am filled with immense pride in the strides we have made together as the board of He Waka Tapu while working alongside our CEO, Jackie Burrows.

Our efforts have been guided by our unwavering commitment to kaupapa Māori principle and values, ensuring that the needs and aspirations of whānau remain at the forefront of all we do.

A significant milestone was the opening of the Ahikā Affordable Housing project in July 2024. This initiative, a collaboration with He Waka Hou Trust and Cook Brothers Construction, has provided ten affordable townhouses in Wainoni, Ōtautahi. More than just buildings, these homes embody our commitment to creating vibrant, sustainable communities where whānau can thrive. The name ‘Ahikā’ symbolizes the burning fires of occupation, reflecting our continuous presence and deep ties to the whenua, especially through whakapapa for some here at He Waka Tapu.





The Board supported and guided He Waka Tapu through the restructuring of the management team, ensuring a fit-for-purpose focus, that reflected the growth of the business and its contracts. This restructuring was undertaken with careful consideration, aiming to enhance our capacity to serve whānau effectively and uphold the integrity of our kaupapa all the while meeting the over-arching management for the organisation and its funding partners.

**It has been a privilege to be a board member for three years, with the last two years as Chair, and I step down knowing that the future of He Waka Tapu is in excellent hands.**

Toni Tinirau



# CEO REPORT

## TĒNĀ KOUTOU KATOĀ,

2025 is already looking to be an amazing year for He Waka Tapu – I look forward to having everyone on board. More mahi, more laughs, more kai (because let’s be honest, that’s important), and probably a record-breaking number of cups of coffee, and don’t forget its 50 cents off if you use your keep cups! But most importantly, it’s another chance to do what we do best supporting and uplifting our whānau!

I want to begin by expressing my deep gratitude to our Board for your rock-solid support over the past year. It’s been a year of growth, challenges, and incredible achievements, and through it all, your leadership has remained a steady pou for He Waka Tapu. Your belief in our kaupapa has ensured we stay true to our vision—working together for whaiora, their whānau and communities to thrive.

Of course, none of this would be possible without our incredible kaimahi. Ngā mihi aroha ki a koutou. Your mahi embodies the essence of kaupapa Māori values of manaakitanga (hospitality and care), whanaungatanga (connection and kinship), and rangatiratanga (leadership and self-determination). Your dedication and passion shine through in every piece of mahi, and whether you are frontline or support systems, it is because of you all that the waka continues to move forward.

One of the biggest highlights this year was the completion of Papa D’s lifelong vision the Ahikā Affordable Housing Project, providing warm, safe homes for whānau. With 10 beautiful units fully tenanted our Ahikā whānau are enjoying affordable rent and low-cost solar power.

This is kotahitanga (unity) in action—working together to meet the needs of our community. Mahi that would not have been possible without our partnership between He Waka Hou Trust, Te Tūāpapa Kura Kāinga – Ministry of Housing and Urban Development (HUD), Rātā Foundation, Westpac NZ and Ministry of Business, Innovation & Employment.

Another proud moment was our kaimahi representing He Waka Tapu at the Indigenous Wellbeing Conference in Tāmaki Makaurau and our marketing team taking part in the Indigenous Public Health Symposium. These were opportunities to share our mahi, strengthen relationships, and champion our tikanga Māori approach on a national stage. Our connection with Wharekauri was reinforced during Chatham Islands Week in October,



where we stood alongside our whānau, listened, learned, and reaffirmed our commitment to ngā iwi o te motu.

We were also privileged to welcome Djirra Australia to He Waka Tapu, strengthening our trans-Tasman connection in the kaupapa of supporting wāhine and whānau. Djirra’s mahi in empowering Aboriginal women and advocating against family violence aligns closely with our own vision of whānau wellbeing. Their visit was a valuable opportunity to share knowledge, experiences, and strategies, reinforcing the importance of indigenous-led solutions in addressing the challenges our communities face.

Looking ahead to 2025, our strategic priorities and tikanga Māori values remain at the heart

of everything we do. With a new management structure in place, we’re refining our practices, strengthening our foundations, and embracing new opportunities to uplift whānau. It’s an exciting time, and I have no doubt that together, we will continue to navigate our waka forward with strength and unity.

**Ngā mihi nui ki a koutou katoa for being part of this journey. Let’s keep moving forward together.**

*Jackie Burrows*

Chief Executive Officer



# KO NGĀ AROTAKE

**Highlights from Whaiora Feedback Survey 2024.**  
**Dr Sue Carswell** (full report in progress)

**The He Waka Tapu Whaiora Survey provides feedback from whaiora who attended He Waka Tapu services during 2024. He Waka Tapu commissions this survey annually (commencing in 2016) to find out how satisfied whaiora are with different aspects of their service; whether attending the service had made any positive differences in their lives; and suggestions for how services can be improved. The survey is open throughout the year to collect whaiora feedback as they exit services.**

The findings from previous Whaiora Surveys are compared to the 2024 findings to monitor how well He Waka Tapu is supporting whaiora to achieve the outcomes they aspire to.

In 2024 243 whaiora answered the survey bringing the total number of whaiora responses from 2017 to 2024 to 1,774. This large sample collected over eight years provides substantial evidence about whaiora and whānau experiences of He Waka Tapu services and how they have contributed towards positive outcomes.

To realise the mission, He Waka Tapu identifies the following values that guide their mahi: **Manaakitanga; Whanaungatanga; Rangatiratanga; and Whakaako.**

How He Waka Tapu has demonstrated these values that guide their mahi is examined throughout the report.



[Click here for more info](#)



# KO NGĀ AROTAKE

**Highlights from Whaiora Feedback Survey 2024.**  
**Dr Sue Carswell** (full report in progress)

## SATISFACTION WITH HE WAKA TAPU PROGRAMMES AND SERVICES:

Whaiora were asked about their **overall satisfaction** with the HWT programmes and/or services they had used.

Of the 243 whaiora just over three quarters (78%) responded with the highest satisfaction level 'It was awesome'. 19% of whaiora responded 'good' and only 3% of whaiora responded 'could be better'.

**78%**  
**SAID IT WAS  
AWESOME**

## THE BEST THINGS ABOUT GOING TO HE WAKA TAPU

All whaiora (243) responded to the question **'What are the best things about going to He Waka Tapu?'**.

"Tautoko" – 58 (24%) whaiora specifically mentioned how they felt supported with their issues and received psycho-educational, emotional, and practical supports.

- Demonstrating whanaungatanga and manaakitanga.
- Welcoming and friendly.
- Whaiora felt safe and comfortable at He Waka Tapu which encouraged them to engage with services, be open and discuss issues.

- Whaiora felt Kaimahi approach was mana-enhancing as they accepted and respected them and importantly did not judge.
- Relatable, honest and open.
- Knowledgeable Kaimahi that explain things clearly and work well with individuals and groups.
- Connection and learning from others
- Gaining knowledge, tools and skills.
- Kaupapa Māori service.

[Click here for more info](#)

# KO NGĀ AROTAKE

## Evaluations & Accountability

### EXTENT THAT HE WAKA TAPU HAS MADE POSITIVE DIFFERENCES IN WHAIORA LIVES.

In 2024 nearly three quarters (73%) of whaiora said that going to HWT had made a “big difference” in their lives. 25.5% indicated HWT had made “a little bit of a difference”. while only a small proportion, 1.6% of whaiora, thought going to HWT had made “no difference”.



### EXAMPLES OF HOW HE WAKA TAPU HAS MADE A DIFFERENCE FOR WHAIORA AND WHĀNAU.

The majority of whaiora, 217 (89%) answered this question. Preliminary analysis shows similar findings to previous years about the ways that He Waka Tapu has made a difference to whaiora and whānau lives.

- Whaiora appreciated the support from He Waka Tapu.
- Appreciation of support and kaimahi.
- Examples of supporting whānau through multiple He Waka Tapu services.
- Help to leave unsafe relationships/family violence.

- Provision of practical supports.
- Support with health and fitness.
- Use of new knowledge, tools, and skills.
- Feeling more positive, confident and hopeful for future.
- Healing holistically and connecting to Te Ao Māori.
- Achieving sobriety/ reduction in drinking/ drug taking.
- Smokefree (and vape-free) or reduced (14 whaiora).
- Stopping violent behaviour/ managing anger / taking responsibility.

[Click here for more info](#)



# AHIKĀ

Affordable Housing Project

**The Ahikā Affordable Housing Project demonstrates the impact that collaboration, innovation, and shared commitment can have on tackling housing challenges in Ōtautahi.**

In 2023, He Waka Hou Trust partnered with Te Tūāpapa Kura Kāinga – Ministry of Housing and Urban Development (HUD), Rātā Foundation, Westpac NZ, and the Ministry of Business, Innovation & Employment (MBIE) to address the pressing need for affordable homes and build thriving, sustainable communities.

Rooted in Kaupapa Māori principles and HUD’s MAIHI Framework for Action, this project focuses on addressing historical disparities and responding to the housing needs of Māori. Through this initiative, ten affordable rental homes were developed on land owned by He Waka Hou Trust, specifically tailored to the needs of whānau in the region.



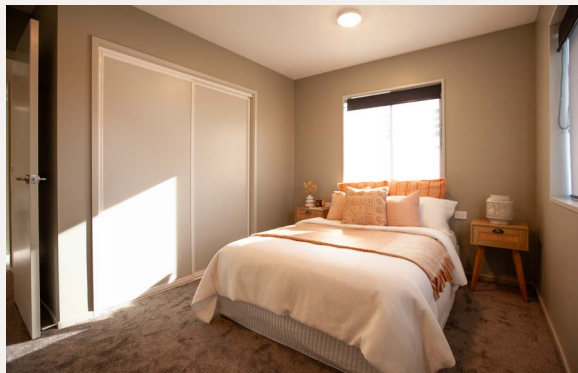
By 2025, all ten units have been fully occupied, marking a significant achievement for the project. This milestone not only highlights the urgent demand for affordable housing but also reflects the success of a model that emphasizes inclusivity, community, and culturally informed practices.

Ahikā represents more than just a housing solution—it is a forward-looking vision for the future. By aligning resources, expertise, and values, this project is helping to create a sense of belonging, empowerment, and resilience for whānau.

This initiative serves as an inspiring example of what can be achieved when we work together, offering hope and momentum for future projects aimed at building connected and resilient communities.



[Click here for more info](#)





# TE ARANGA HEALTH

Community Clinic / General Practice

As we reflect on 2024, Te Aranga Health Clinic is proud of the progress we've made in supporting our community. Our commitment remains strong: to ensure healthcare is accessible to whānau, regardless of the challenges they face, while building a welcoming, supportive, and respectful environment.

This year, we enhanced our services by adding a Comprehensive Primary and Community Care (CPCT) contract, which includes a dedicated kaiawhina, a physiotherapist, a pharmacist, and a care coordinator, significantly improving our capacity to support patients holistically.

We successfully launched our Colposcopy clinic, empowering east side wāhine by removing barriers related to hospital visits.

Additionally, we've facilitated in-house appointments with a nutritionist from the Diabetes Centre, further easing access to essential health services.

Our team has grown with the addition of three new GPs since March 2024: Hai Sue and Laudi, who are working towards their fellowship, and Jane, our new Clinical Director. Furthermore, Kathleen has completed her nurse prescribing training and is now able to prescribe, enhancing our patient care capabilities.

We've also started offering minor surgeries on-site, led by our experienced GPs and nurses. The introduction of HPV self-swabbing has boosted screening numbers significantly by removing barriers for those uneasy about traditional Pap smears.



[Click here for more info](#)

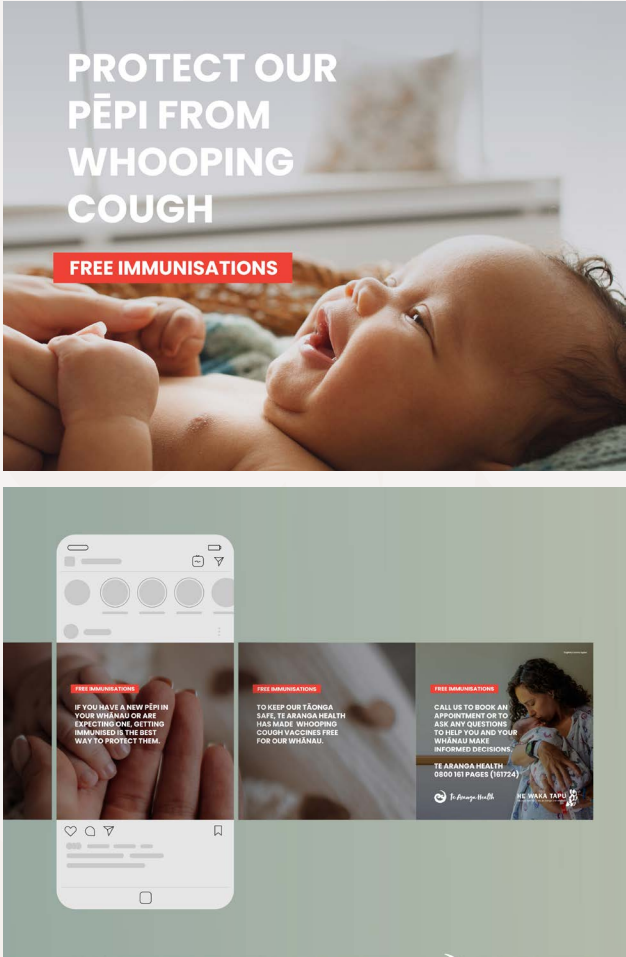
In terms of immunisations, we have utilised our winter preparedness contract to raise awareness at community events. Our outreach and patient recalls have begun yielding positive results, especially during the ongoing whooping cough epidemic.

Our enrolment numbers reflect our growth, clearing 2,500 patients after the New Year and continuing to rise. Our clinical team is well-equipped for this expansion and remains dedicated to ongoing outreach efforts.

Additionally, we've improved referrals into HWT, thanks to our kaiawhina, who connects patients with our GPs and nurses. This coordination ensures patients receive necessary social support while allowing our clinical team to focus on care.

Our administrative team has also enhanced income streams through better claims management and improved Accounts Receivable processes, leading to a healthier financial future for the clinic.

Looking ahead to 2025, we remain committed to building on these achievements, responding to the evolving needs of our whānau, and ensuring Te Aranga continues to be a space of support and empowerment for all.



[Click here for more info](#)



# CELEBRATING MATARIKI

## A Collaborative Musical Journey

**This Matariki, the team at He Waka Tapu set out to uplift our whānau and hapori through music and art. With limited time, we embraced the challenge of writing and recording a waiata that truly reflects the spirit of this meaningful occasion.**

We are lucky to have a diverse range of talent within our organisation, including skilled vocalists, classically trained musicians, accomplished songwriters, and dedicated Taonga Pūoro enthusiasts. Recognising this abundance of creativity, we came together to celebrate Matariki through this special kaupapa.

The waiata features the wonderful voices of Martha Daniels, Sienna Fuataga Aukusitino, and Tipazo Aukusitino. The lyrics were crafted

by Tyler Aukusitino, Tipazo Aukusitino, Martha Daniels, and Lucas Fahey, while the production, mixing, and mastering were expertly handled by Infectiouss and Thom O'Connor, with guitar performed by Tipazo Aukusitino.

We also included traditional elements, such as whakataukī and Toanga Pūoro from David Sio, along with karakia and mihimihi from Shane Kereama and Paul Mouat. The project was brought to life visually by the creative direction of Lowee Nagal and Lucas Fahey, filmed at the vibrant Orange Studios.

We invite you to enjoy this special piece of art, created with passion and collaboration, aimed at inspiring and connecting our community.

### Mānawatia a Matariki!



[Click here for more info](#)





# NGĀ IWI O TE MOTU



# KAIMAHI AND CULTURAL DEVELOPMENT

He Waka Tapu celebrate many of our Kaimahi achieving and working towards various diplomas and certifications in 2024 and into 2025, including Health & Wellbeing in Mental Health and Addictions. Supported by dedicated mentoring from the L&D Coordinator. Future growth is further enhanced by the qualification of one Kaimahi as a Careerforce assessor for Level 2 & 3 programs.

Foundational training has expanded with pivotal programs including De-escalation & Ethics Training led by Dr. Chris Taua, attended by 40 Kaimahi, and Mental Health & Addiction 101, which reached 52 Kaimahi. Dawn Tepania's Ngā Kākano training successfully guided 23 Kaimahi through a three-part series.

In community engagement, Tikanga Day Workshops support cultural appreciation

and competence across our teams, while the Te Reo Māori and Waiata Open Groups, co-facilitated by Matua Tāne, draws 25-35 Whaiora and kaimahi weekly for conversational Māori lessons. Additionally Taryn's contributions to Mauri Ora experiences enhance whānau understanding of Raranga and Rongoā practice.

On the training front, the He Puna Whakaata Program welcomed 31 Kaimahi to improve mental health outcomes for Māori. Noteworthy staff achievements include certifications in various health and food safety areas and much more.

**Through these efforts, He Waka Tapu remains dedicated to enriching the professional development of its Kaimahi, laying a strong foundation in health and wellbeing practices.**



**The Australian & New Zealand Mental Health Association:** Indigenous Wellbeing Conference

**Auckland: 20 October**

The conference held over three days, was packed with insightful discussions, workshops, and presentations—over 40 concurrent sessions in total. Plus an exhibition and communal area hosting sponsors, booths, stalls, shops and coffee carts.

The Conference proved to be an invaluable opportunity for both the Kaimahi who attended and those in our organisation who streamed in from home and the office, shining a light on the importance of our collective narratives and the shared journey toward better health outcomes. Feeling inspired and empowered to contribute to this movement and mostly eager to share and apply what we learned in our own work.

**Hāpai Te Hauora:** Indigenous Public Health Symposium 2024

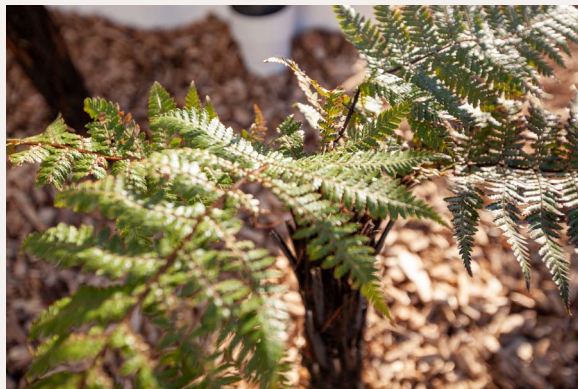
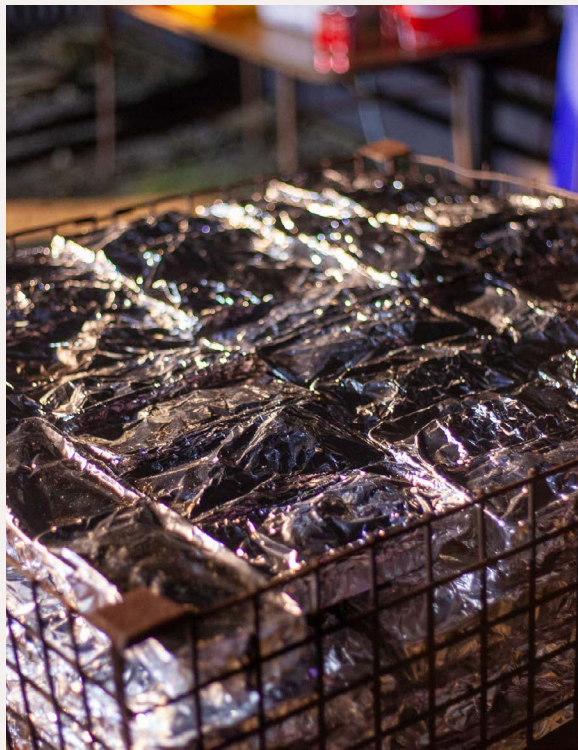
**Wellington: 26–28 November**

The He Waka Tapu Marketing and Communications team attended a two-day conference in Wellington on Māori public health, enhancing our understanding of health in Māori and indigenous communities in Aotearoa and beyond. The speakers emphasized a holistic model of health that integrates whakapapa, taiao, kai, and artistic expression.

Inspired by this conference, we aim to incorporate these insights into our work at He Waka Tapu. By embracing mātauranga Māori and building trust, we can create a resilient community. Focusing on holistic health and Māori frameworks enables us to empower our whānau, celebrating our culture and ensuring all Māori feel valued in their health journeys.









# HĀPORI PRESENCE

## Community wellbeing

### PAE ORA

Our annual whānau fun walk / run was even bigger than years past! The energy throughout the day was amplified by MC, George (affectionately known as The Host from the Coast), and DJ Danny-ill, who brought the perfect vibe at the start and finish line. Special mention to YCD – Youth & Cultural Development team, who fired up the BBQs to make sure that everyone was well-fed.

We would like to acknowledge our generous funders and sponsors, including Rātā Foundation, Christchurch City Council, Health New Zealand – Te Whatu Ora, The Cancer Society of New Zealand, The I.T. Team, Merrell, Garmin, and OSM. Your ongoing support enables us to create these memorable experiences and continue our mission of encouraging community wellbeing.




---

**“A whānau adventure which is turning into an annual tradition. It’s something our family and friends can all do together that’s healthy and cost isn’t a factor”**

Whānau of 5 – Halswell

---

**“Love getting the kids to do this. They did it this year with 2 cousins who were up from Ōtepoti and with family (aunt, uncle and 2 cousins)”**

Whānau of 4 – Middleton

---

**“Whānau and having a positive whānau experience with them, where we knew it was a safe environment for our children. Eg: no drugs or drinking and around hauora”**

Whānau of 3 – St Martins

## HE WAKA TAPU WHĀNAU DAYS

Our whānau days provide a wonderful opportunity to open our doors and welcome the community into our spaces, sharing kai, laughter, information, and simply offering a day of whanaungatanga.

This year, we held three events at 161 Pages Road in Ōtautahi, two in Hakatere (Ashburton), and similar gatherings in Wharekauri (Chatham Islands).

Highlights included performances by Te Whānau Whānui o He Waka Tapu, featuring numerous kapa haka showcases, free coffee carts, and kai support from various connections across our communities. Local councils and police engaged with rangatahi by organising games, dress-ups, and competitions, as well as Santa photos and much more—even Hakatere's own Pūkana competition!

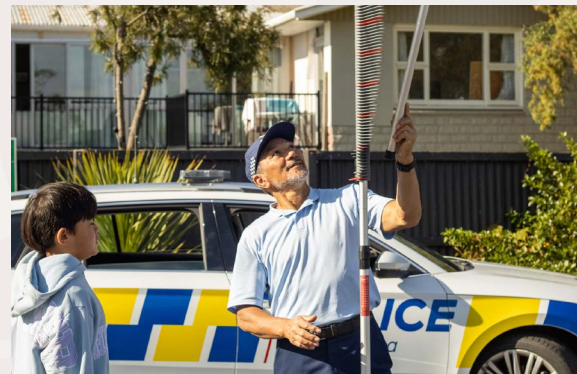
As always, the success of the Whānau Fun Day reflects the generosity of the local community and the efforts of the He Waka Tapu team. We look forward to welcoming whānau back for the many future events we hold in the communities we support.

In summary, our whānau days truly embody the spirit of community, bringing people together to celebrate and connect. Each event helps strengthen our relationships and reinforces our commitment to supporting one another. There will be many more opportunities through 2025 to share laughter and create lasting memories at future events.

## ME MAHI TAHI TĀTOU MO TE ORANGA O TE WHĀNAU









# KA MUA KA MURI

Walking backwards into the future

**This year we celebrate 30 years of He Waka Tapu, and as we look back over the last 30 years, it is essential to reflect on the foundational principles that shape our understanding of Māoritanga.**

This perspective, and the Whakatauakī ‘Ka Mua Ka Muri’ emphasizes that time exists on a continuum where the past, present, and future are interconnected through our ancestors and their actions.

Throughout the last three decades, we have embraced this understanding, recognising the vital importance of our heritage while adapting to the evolving needs of our communities.

Looking ahead to the next 30 years, it is crucial for us to take stock of how far we as an organisation, team and community have come. By celebrating our achievements, we honour the dedication and resilience of those who have

supported us along our journey. Equally, we must learn from our experiences, recognising both our successes and challenges.

This reflection will empower us to make informed decisions as we move forward, ensuring our approach remains relevant and responsive to the needs of our whānau on their own journeys.













# KO NGĀ TAUĀKĪ PŪTEA

Financial Statements

## Statement of Responsibility

The Board of Directors has pleasure in presenting the consolidated financial report of He Waka Tapu Group, incorporating the consolidated financial statements of the group for the year ended 31 March 2024.

The Board accepts responsibility for the preparation of the Group’s financial statements and the judgement used in the statements.

The management accepts responsibility for establishing and maintaining a system of internal control designed to provide reasonable assurance as to the integrity and reliability of the Group’s financial reporting.

In the opinion of the Board and management, the Group’s financial statements for the financial year fairly reflect the financial position and operation of the Group.

The Group’s year end 2024 consolidated financial statements are authorised for issue by the Board.

Director .....  
Date .....  
5 December 2024

Director .....  
Date .....  
5 December 2024



Statement of Service Performance

Description Of Entity

He Waka Tapu, founded in 1996 and based in Christchurch, NZ, serves communities in Canterbury, Hakatere, Kaikōura, North Canterbury, and Selwyn with a focus on holistic well-being, guided by Kaupapa Māori values. Our Vision is to empower whaiora and whānau through knowledge, tools, insights, and positive changes, ensuring holistic well-being. He Waka Tapu is the go-to place for practical knowledge about whānau wellbeing.

The He Waka Tapu services are designed to meet the unique needs of our community, ensuring that they are responsive and accessible. We prioritise building strong, supportive relationships with our whaiora and whānau. Our approach is guided by Kaupapa

Māori values, ensuring that our services are mana-enhancing, non-judgemental, and supportive of whānau and community well-being.

We prioritise the well-being of our kaimahi, exemplified by our Four Day Working Week initiative. Regular feedback is gathered from kai mahi to continuously improve our organisational practices.





Statement of Service Performance

Descriptions Of Our Outcomes

**Strengthened whānau relationships and improved whānau well-being:** He Waka Tapu provides comprehensive support for whānau, including counselling, education, and resources through face-to-face sessions, group workshops, and online resources.

**Improved mental health, reduced substance use, and enhanced life skills:** He Waka Tapu support for whaiora experiencing mental health and addiction issues by providing one-on-one counselling, crisis response, group therapy, and support groups.

**Increased engagement in education, improved self-esteem, and better life choices for our Youth:** He Waka Tapu provides targeted support for rangatahi, including mentoring and educational programs by delivering school-based programs, community activities, and one-on-one support.

**Improved physical health, increased community engagement, and enhanced quality of life:** He Waka Tapu provides programs promoting physical health and overall well-being through the delivery of fitness classes, nutritional advice, and wellness workshops.

	2024	2023
DESCRIPTION AND QUANTIFICATION OF THE ENTITY’S OUTPUTS		
New Journeys (new referrals accepted during the period)	3,322	3,142
TOTAL ATTENDEES	2,324	5,211

\*Data collected from Noted client management system

\*Financial Statements for the year ended 31 March 2024

## Consolidated Statement Of Comprehensive Revenue and Expenses

	NOTES	2024	2023
<b>REVENUE</b>			
Revenue from Exchange Transactions	5	1,033,789	305,056
Revenue from Non-Exchange Transactions	5	13,095,746	11,425,510
Revenue from Share of equity accounted investees surplus for the year	5		6,977
Other Revenue	5		35,618
Total Revenue		14,129,534	11,773,162
<b>TOTAL REVENUE</b>		<b>14,129,534</b>	<b>11,773,162</b>

	2024	2023
<b>EXPENSES</b>		
Accounting Fees	29,212	29,905
Audit Fees	34,500	30,608
Depreciation	124,019	130,055
Donations	254,390	500,000
Funding Expenses	1,429,586	2,646,147
GP Practice Expenses	-	20,606
Occupancy Expenses	953,089	930,832
Personnel Expenses	8,560,689	7,552,967
Vehicle Expenses	97,910	109,303
Operating Leases	239,071	205,633
Other Expenses	1,033,131	725,019
Total Expenses	12,755,598	12,881,074
<b>SURPLUS/(DEFICIT) FOR THE YEAR</b>	<b>1,373,937</b>	<b>(1,107,913)</b>
<b>TOTAL COMPREHENSIVE REVENUE AND EXPENSE FOR THE YEAR</b>	<b>1,373,937</b>	<b>(1,107,913)</b>



## Consolidated Statement of Financial Position

	NOTES	2024	2023
<b>EQUITY</b>			
Opening Balance		3,189,638	4,297,550
Increases			
Current Year Earnings		1,373,937	(1,107,913)
Total Increases		1,373,937	(1,107,913)
<b>TOTAL EQUITY AT THE END OF THE YEAR</b>		<b>4,563,574</b>	<b>3,189,638</b>
<b>ASSETS</b>			
Current Assets			
Cash and Cash Equivalents	7	2,893,701	1,988,128
Receivables And Other Current Assets	8	2,575,544	1,838,008
<b>Total Current Assets</b>		<b>5,469,245</b>	<b>3,826,136</b>
<b>CURRENT LIABILITIES</b>			
Payables and Accrued Expenses	9	1,397,187	1,215,269
<b>Total Current Liabilities</b>		<b>1,397,187</b>	<b>1,215,269</b>
<b>NON CURRENT ASSETS</b>			
Intangible Assets	13	139,349	148,584
Property, Plant and Equipment	12	352,167	430,187
<b>Total Non-Current Assets</b>		<b>491,517</b>	<b>578,771</b>
<b>NET ASSETS</b>		<b>4,563,575</b>	<b>3,189,638</b>

## PROPERTY, PLANT AND EQUIPMENT

	LEASED PROPERTY	PLANT & EQUIPMENT	MOTOR VEHICLES	FURNITURE & FITTINGS	INFORMATION TECHNOLOGY	TOTAL
<b>2024</b>						
Opening Value	212, 211	168,252	19,130	26,973	3,620	<b>430,186</b>
Additions/ (Disposals)	-	22,042	13,043	(703)	2,383	<b>36,765</b>
Depreciation	(27,578)	(72,540)	(7,257)	(4,407)	(7,257)	<b>(114,784)</b>
<b>CLOSING VALUE</b>	<b>184,633</b>	<b>117,754</b>	<b>24,917</b>	<b>21,862</b>	<b>3,001</b>	<b>352,167</b>
<b>2023</b>						
Opening Value	229,440	189,156	25,003	29,635	7,240	<b>430,474</b>
Additions/ (Disposals)	14,610	65,995	-	2,400	-	<b>83,005</b>
Depreciation	(31,839)	(86,899)	(5,872)	(5,062)	(3,620)	<b>(133,293)</b>
<b>CLOSING VALUE</b>	<b>212, 211</b>	<b>168,252</b>	<b>19,130</b>	<b>26,973</b>	<b>3,620</b>	<b>430,186</b>


\*Financial Statements for the year ended 31 March 2024

## Consolidated Statement of Cash Flows

	2023	2022
<b>CASH FLOWS FROM OPERATING ACTIVITIES</b>		
Receipts from providing goods and services	13,083,008	11,713,738
Interest, dividends and other investment receipts	17,978	4,355
Payments to suppliers & employees	(12,122,608)	(12,240,062)
Donations or grants paid	(254,390)	(500,000)
GST	208,050	(54,974)
<b>Total Cash Flows from Operating Activities</b>	<b>932,038</b>	<b>(1,078,943)</b>
<b>CASH FLOWS FROM INVESTING ACTIVITIES</b>		
Proceeds from loans borrowed from other parties	10,300	-
Payments to acquire assets	(36,765)	(123,995)
Payments for purchase of investments		(63,160)
Repayment received on loans made to other parties	(0)	(15,500)
<b>Total Cash Flows from Investing Activities</b>	<b>(26,465)</b>	<b>(202,655)</b>
<b>NET INCREASE/(DECREASE) IN CASH</b>	<b>(905,573)</b>	<b>(1,281,598)</b>

	2023	2022
<b>CASH AND CASH EQUIVALENTS</b>		
Opening cash	1,988,127	3,269,725
Net change in cash for period	905,573	(1,281,472)
<b>CLOSING CASH</b>	<b>2,893,701</b>	<b>1,988,127</b>





# ME MAHI TAHI TĀTOU MO TE ORANGA O TE WHĀNAU

**0800 HE WAKA (43 9252)**

03 373 8150 | TXT 027 2 HE WAKA (43 9252)

161 Pages Road, Christchurch, New Zealand 8061

[www.hewakatapu.org.nz](http://www.hewakatapu.org.nz)

**HE WAKA TAPU**

*Me mahi tahi tātou mo te oranga o te whānau*

